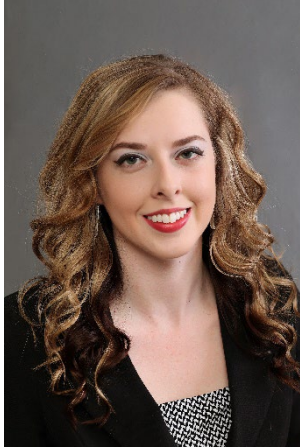




## **Beyond Wealth Advisors Welcomes Carlie Kent to the Team!**

**Lee's Summit, Mo.** – September 2022 – Beyond Wealth Advisors is pleased to announce the addition of Carlie Kent as our newest Financial Advisor, and Client Relationship Associate, RJFS.



Carlie will contribute to BWA's success by cultivating new, and existing relationships with clients. She joins BWA with 7 years of industry experience. She received her Bachelor's Degree in Personal Financial Planning, with a minor in Business from Kansas State University in 2015.

"We are confident Carlie will fulfill a key role in our organization," shares John Kliewer. "She brings an innovative perspective, that is sure to add infinite value to our team."

### **About Beyond Wealth Advisors**

Beyond Wealth Advisors focuses on helping clients prepare for their today, tomorrow and beyond. With nearly 100 years of collective industry experience, Beyond Wealth serves the diverse needs of individuals, families, retirees, business owners and non-profit organizations. Beyond Wealth embraces servant leadership and is committed to helping clients achieve their financial objectives and make a lasting impact with their resources. For more information, visit their website at [www.beyondwealthadvisors.com](http://www.beyondwealthadvisors.com).

[www.beyondwealthadvisors.com](http://www.beyondwealthadvisors.com)

600 SW Jefferson, Suite 208 | Lee's Summit, MO 64063 | 816.246.8450

Securities offered through Raymond James Financial Services, Inc., member FINRA/SIPC Investment advisory services are offered through Raymond James Financial Services Advisors, Inc. Beyond Wealth Advisors, Inc. is not a registered broker/dealer and is an independent of Raymond James Financial Services.

Media Contact: For more information, contact Alejandra Walkup at 816-246-8450 or [alejandra.walkup@BeyondWealthAdvisors.com](mailto:alejandra.walkup@BeyondWealthAdvisors.com)

